



## **AUDIZIONI 2024 - FLAUTO (ottavino facoltativo)**

Esecuzione del primo movimento senza cadenze del concerto scelto dal candidato tra i seguenti:

- W.A. Mozart, Concerto in SOL Maggiore KV 313;
- W.A. Mozart, Concerto in RE Maggiore KV 314.

Esecuzione dei seguenti passi d'orchestra:

- L. van Beethoven, Sinfonia n. 3 "Eroica", IV movimento;
- G. Bizet, Carmen, Intermezzo III atto;
- F. Mendelssohn, Sogno di una notte di mezza estate;
- S. Prokofiev, Pierino e il lupo;
- G. Rossini, Guglielmo Tell, Sinfonia.

Ottavino

- G. Rossini, Semiramide;
- M. Ravel, Concerto in SOL Maggiore.



Istituzione Musicale e Sinfonica  
del Friuli Venezia Giulia  
C. F. 90025650301  
P. IVA 02978950307  
info@fvgorchestra.it  
fvgo@pec.fvgorchestra.it

Sede operativa  
Contrada Savorgnan, 2  
33057 Palmanova (UD)

Sede legale  
Via San Francesco, 34  
33100 Udine

4. Satz (Finale)

Sinfonie Nr. 3  
Es-Dur/E<sup>b</sup> major („Eroica“)

L. van Beethoven  
op. 55

Allegro molto [♩ = 126-144]

The image shows a page of musical notation for the 4th movement of Beethoven's Symphony No. 3. It consists of four staves of music in G major (E-flat major), 2/4 time, with a tempo of Allegro molto. The first staff begins at measure 171 with a forte (ff) dynamic and a piano (p) dynamic. The second staff starts at measure 179 with a crescendo (cresc.) leading to sf and then p. The third staff starts at measure 187 with a crescendo (cresc.) and p, followed by sempre stacc. The fourth staff starts at measure 193 and ends with a double bar line. The notation includes various note values, rests, and dynamic markings.

3. Akt 1. Bild  
Vorspiel

# Carmen

Allegretto quasi Andantino [ $\text{♩} = 60-72$ ]

Georges Bizet

*Solo*  
*pp dolcissimo*

①  
*ppp*

*tr* ②  
*p* *p cresc.*

③  
*mf dim.* *pp dim.* *pp smorz.*

# Ein Sommernachtstraum

Scherzo

Allegro vivace [♩ = 80-96]

Felix Mendelssohn-Bartholdy  
op. 61

338

344

351

357

364

*cresc.* *dim.*

371

377

*pp*

Flauto

# ПЕТЯ И ВОЛК

СИМФОНИЧЕСКАЯ СКАЗКА ДЛЯ ДЕТЕЙ

С. Прокофьев

*Andantino*

8 12

**1**

*Allegro*

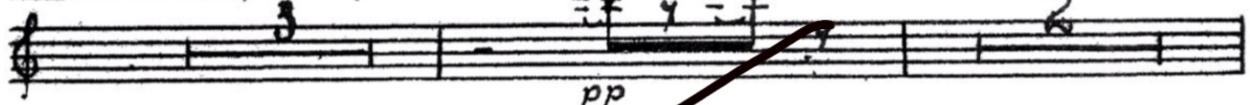
**2**

*mf*

**3**



4 *Andantino, come prima.*



5 8 *f con brio*

2 *f* 3 3

2

4 *acceler.* 9 *f* *Più mosso* 2

*f* *f*

3 10

*P* 4 *rit.* 11 *Moderato* 7

12 8 *pp*

13 *Allegro, ma non troppo* *P* 2 5 5 5 5

# Wilhelm Tell

## Ouverture

Andante [♩ = 56-60]

Gioacchino Rossini

Cor. anglais

Solo

180

186

194

200

204

207

211

214

217

221



# Semiramis

## Ouverture

Allegro [♩ = 138]

Gioacchino Rossini

132 *p*

136

140 *f*

190

194 321 *f*

325 *pp*

\* T.190/191 Eulenburg-Partitur



Piccoloflöte

# Klavierkonzert G-dur

1. Satz

Allegramente [♩ = 112-120]

Maurice Ravel

The image shows a page of musical notation for the Piccolo flute part of the first movement of Maurice Ravel's Piano Concerto in G major. The score is written on five staves. The first staff begins with a first ending bracket and a first ending sign (1). The second staff continues the melodic line. The third staff features a first ending sign (1) and a fortissimo (ff) dynamic marking. The fourth and fifth staves consist of rapid sixteenth-note passages, with the fourth staff starting at measure 36 and marked with a forte (f) dynamic, and the fifth staff marked with fortissimo (ff). The key signature is one sharp (F#) and the time signature is 2/2.